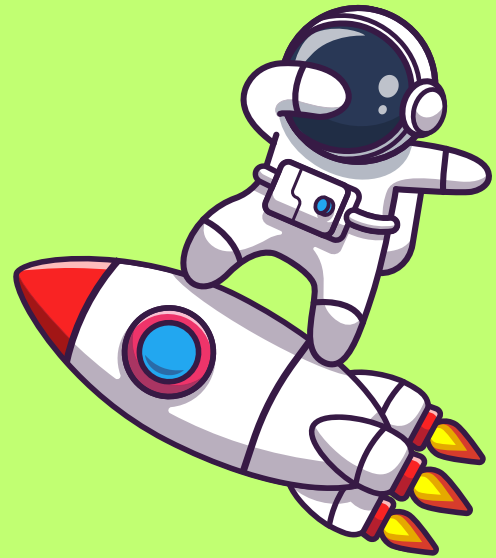




A day in the life of...

Split the students in 6 groups, assign a character to each group without revealing it to the others. Then ask them to write down the daily routing of their character. When every group is done, one representative of the group stands up and the other groups ask him about the routine. The first group guessing the character, gets a poin. Then you proceed with another group

an astronaut



At 8.00 AM

At 12.00 AM

At 3.00 PM

At 6.00 PM

At 8.00 PM

At 10.00 PM



a football player

At 8.00 AM

At 12.00 AM

At 3.00 PM

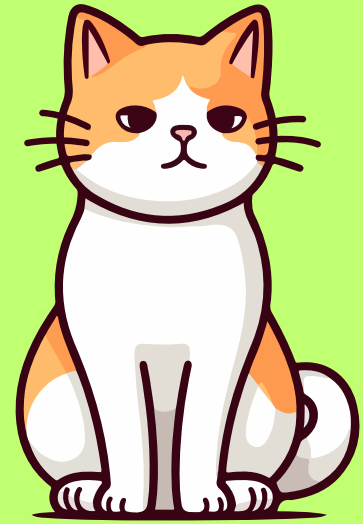
At 6.00 PM

At 8.00 PM

At 10.00 PM



a cat



At 8.00 AM

At 12.00 AM

At 3.00 PM

At 6.00 PM

At 8.00 PM

At 10.00 PM



a student



At 8.00 AM

At 12.00 AM

At 3.00 PM

At 6.00 PM

At 8.00 PM

At 10.00 PM



a superhero



At 8.00 AM

At 12.00 AM

At 3.00 PM

At 6.00 PM

At 8.00 PM

At 10.00 PM



a zombie



At 8.00 AM

At 12.00 AM

At 3.00 PM

At 6.00 PM

At 8.00 PM

At 10.00 PM